

Ancillary Products

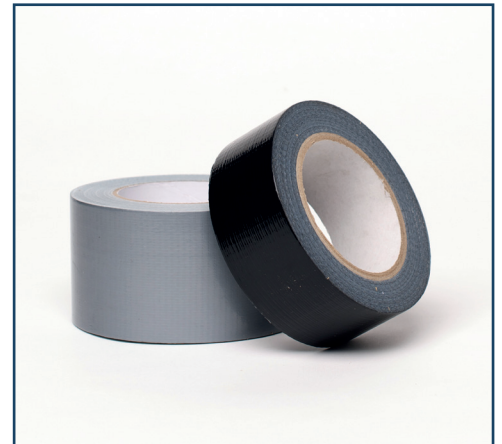
PCL Tape

Product Description

PCL Tape is a laminated polyethylene cloth tape with a pressure-sensitive calendared hot-melt adhesive.

Features

- Good conformability to irregular surfaces
- Good adhesion
- Easy to tear by hand



Typical Applications

- Creating isolation barriers
- Prevention of electrolytic corrosion
- Liner panel sealing
- Duct sealing
- Binding, reinforcing and securing

PCL Tape	
Tape thickness	0.178mm
Colour	Black / Grey
Widths	50mm, 75mm, 100mm
Breaking load	87.5 N/25mm
Adhesion to steel	13.75 N/25mm
Service temperature	-5°C to +70°C
Application temperature	+5°C to +40°C
Copper corrosion test	No staining
Shelf life	1 year

Please note: The above technical information is given as a guide and is based on recent test data obtained under laboratory conditions. Materials should be fully tested by the end user to establish suitability of the product for the intended application. October 2014

Premier Sealant Systems Ltd.

T 01724 864 100 | E sales@sealprem.com | www.sealprem.com

Mercia Way, Foxhills Industrial Park, Scunthorpe, DN15 8RE

Registered Office: 19 Titan Court, Luton, LU4 8LL | Registered in Cardiff No. 3000843