

Black+ Ultra Roof & Wall Breather Membrane

Product Description

An entry level, lightweight, versatile breather membrane for all pitched cold and warm roofs, as well as insulated wall applications. The material meets EN 13859-1 for pitched roofing and EN 13859-2 for walls. Novia® Black+ Ultra has excellent water resistance but still provides high breathability. It also complies with EN 13501-1 Fire Classification Class E. The product is completely black on one side, grey on the reverse, with no text or images, except for a 150mm overlap line.

Features

- 3-layer, high performance wall breather with microporous core
- Class W1 water resistance to EN 1928
- Airtight, and vapour permeable
- Good tensile and nail tear strength
- Grade E (fire) to EN 13501-1
- UKCA to EN 13859-1 (roofs) and EN 13859-2 (walls)
- Tested for BS 5534 wind uplift requirements
- Install as per BS 5534 UV Guidance

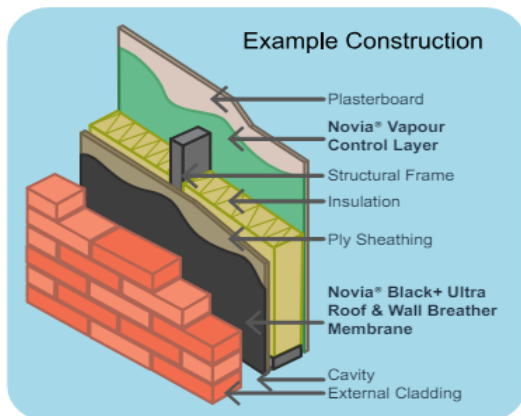
Typical Applications

- Wall breather membrane
- Roof breather membrane

	Value
Standard Width	1.5m
Roll Length	50m
Roll Weight	8 kg EN 1849-2
Nominal weight	102 g/m ² EN 1849-2
Tensile strength MD / CD	250/140 N/50mm EN 12311-1
Elongation MD / CD	60/70% EN 12311-1
Tear resistance MD / CD	100/95N EN 12310-1
Sd value	0.029 m EN ISO 12572
Resistance to water penetration	W1 Class EN 1928
Resistance to water penetration (after ageing)	W1 Class EN 1928
Low temperature stability (no cracking at)	-60°C EN 1109
Reaction to fire	E Class EN 11925-2
UV resistance	Install as per BS 5534 UV Guidance

Installation Guidance For Walls

Fix the Novia® Black+ Ultra to the wall structure; upper layers should overlap lower layers. Work from the bottom moving upwards, using minimum overlaps of 100mm on the horizontal joints. Do not begin a vertical lap joint within 300mm of a corner, and vertical laps should be at least 150mm. Ensure the bottom timber is also protected by an overlap. Fix at suitable intervals with galvanised nails, stainless staples or similar fixings that will be permanent. Do not leave the membrane unnecessarily exposed to weathering, high winds, excessive UV etc. as this may cause damage over time. If you must leave the membrane exposed for extended periods of time, consider the use of suitable temporary protection materials.



Installation Guidance For Roofs

Novia® Black+ Ultra can be installed within all standard roof applications. Membrane can also be used in conventional cold roof applications. Fix the membrane to the roof structure and ensure upper layers overlap lower layers. Work from the bottom moving upwards and ensure there are minimum overlaps used as shown within BS 5534. The membrane should be overlapped 200mm on each side of the ridge. All vertical overlaps must be situated on a rafter and must be sealed. Fix at suitable intervals with galvanised nails, stainless staples or similar approved fixings that will be permanent. At any entry points for services (soil pipes, vents etc.), ensure that Novia® Black+ Ultra is properly sealed. Where pipes etc. penetrate the underlay, cut neatly and accurately and turn edges up to give a tight water-resistant fit, and seal with Novia® tapes.

Novia® Black+ Ultra is suitable for use in BS 5534 wind uplift applications. Following successful tests, this membrane can be used with a ≤ 345 mm batten in zones 1 without additional tapes, and in zones 1-5 using our Breather Membrane Lap Tape.

	≤ 345 mm batten gauge with battened laps	≤ 250 mm batten gauge with battened laps	≤ 345 mm batten gauge with taped laps	≤ 345 mm batten gauge with minimum 11mm counterbatten
Novia® Black+ Ultra Zone Suitability	Zone 1	Zone 1 to 5	Zone 1 to 5	Zone 1 to 4
Novia® Black+ Ultra Wind Uplift Resistance	826 Pa	1715 Pa	1830 Pa	1531 Pa

Installation Tapes

We strongly advise the use of Novia® installation tapes, even if tape is not specified for mandatory use within particular zone under the BS 5534 wind uplift test results. The use of tapes will greatly improve the performance and overall airtightness of the roof structure. We offer a single-sided Novia® Breather Membrane Lap Tape for basic installations and, for high specification work where there is even greater emphasis on airtightness, we offer the optional Novia® Double Sided Lap Tape. For the very best standards of installation and airtightness, we advise the use of both types of tape, which will ensure a long lasting, high quality, breathable and airtight seal is formed.

Other Notes:

Ensure that a Novia Air & Vapour Control Layer, such as Novia® 500g, 1000g or 1200g (virgin grade polythene AVCLs) or Novia® VC200 Reflective, is installed on the warm side of the insulation to limit unwanted interstitial condensation. As little as 1% - 3% moisture contamination within the insulation can adversely affect the achieved thermal performance by more than 30%.

Novia® Black+ Ultra will reduce the risk of condensation within the roof space, but in certain atmospheric conditions it can never be totally eliminated.

Ensure that sufficient ventilation is incorporated to comply with all relevant building regulations.

Always handle material carefully to prevent tears and punctures. Repair any on-site damage with Novia® tapes.

All Novia® products should be stored horizontally, indoors and out of direct sunlight. External storage must be on a temporary basis. When stored externally, Novia® products should be covered and protected from exposure to weather conditions, especially wind, rain, frost and UV. Pallets should not be stacked.

Please note: The above technical information is given as a guide and is based on recent test data obtained under laboratory conditions. Materials should be fully tested by the end user to establish suitability of the product for the intended application. March 2024

Premier Sealant Systems Ltd.

T 01724 864 100 | E sales@sealprem.com | www.sealprem.com

Mercia Way, Foxhills Industrial Park, Scunthorpe, DN15 8RE

Registered in Cardiff No. 3000843