

ARBO®

ARBOShield Pro Class A Air & Vapour Control Layer

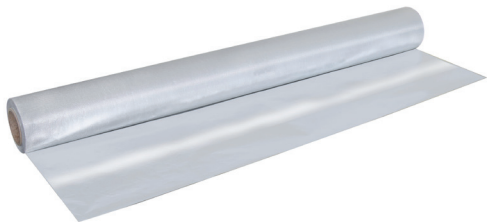
ARBOSHIELD

ARBO Façade Solutions (ARBO FS) is the new name for a ground-breaking initiative from ARBO, one of the longest established names in UK construction materials.

ARBOShield Pro Class A Air & Vapour Control Layer is a high performance air and vapour control layer featuring a low-emissivity reflective surface designed to combine Class A2-s1,d0 fire classification with high tensile strength and enhanced thermal performance.

MAIN APPLICATIONS

ARBOShield Pro Class A Air & Vapour Control Layer is an integral part of the ARBO FS range, suitable for practically all walling applications, especially high-rise and high-risk buildings such as schools, hospitals, care homes and residential blocks, helping to prevent the risk of fire spread. ARBOShield Pro Class A Air & Vapour Control Layer delivers enhanced thermal performance when installed facing a still air cavity, improving the overall u-value and energy efficiency of the building. For further details, contact ARBO Technical Services techservices@arbo.co.uk



SIZE

Weight, gsm	140
Roll Width	1200mm
Roll Length	50m

www.arbo.co.uk/ARBOShield

CARLISLE
CM EUROPE

TECHNICAL DATA

Product	Standard	Description	Performance
ARBOShield Pro Class A AVCL	EN 13501	Reaction to Fire	A2-s1,d0
		Thermal Resistance R	0.67 m ² K/W*
	EN 12572	Water Vapour Transmission (sd)	>2500 m
	EN 13859-1	Tensile Strength MD	1362 N/50mm BS EN 12311-1
	EN 13859-1	Tensile Strength CD	1349 N/50mm BS EN 12311-1
	EN 13859-1	Resistance to Tearing MD	150 N/50mm BS EN 12310-1
	EN 13859-1	Resistance to Tearing CD	150 N/50mm BS EN 12310-1

*When facing a 20mm still airspace

FIXING INSTRUCTIONS

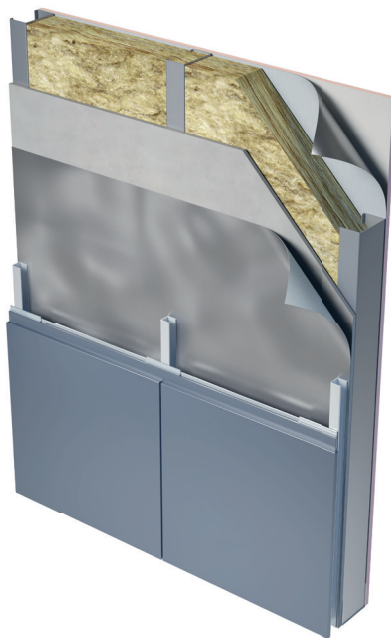
ARBOShield Pro Class A Air & Vapour Control Layer (AVCL) should always be installed on the warm side within the wall, roof or floor insulated cassette.

ARBOShield Pro Class A AVCL should be installed using ARBOShield Pro Class A High Tack Sealing Tape around window/door reveals and at joints or corner junctions (Figure 1).

Fix ARBOShield Pro Class A Air & Vapour Control Layer to the substrate using a suitable fixing method ensuring any joints in the material have a minimum overlay of 100mm (Figure 2).

Seal all joints using ARBOShield Pro Class A High Tack Sealing Tape ensuring the material is free for dust to obtain a clean seal. Cut the membrane around any windows/doors using a diagonal cutting method and fold the overlap into the reveal finishing with sealing tape.

Any penetrations by cable or pipe through the AVCL should be sealed using ARBOShield Pro Class A High Tack Sealing Tape to prevent air and moisture leakage.



Example SFS type façade wall construction

STORAGE

ARBOShield Pro Class A Air & Vapour Control Layer should be stored in cool, dry conditions in the upright position.

HEALTH & SAFETY

The material Safety Data Sheet must be read and understood before use. All relevant standards should be observed on site, including manual handling and working at height.

ASSOCIATED PRODUCTS

ARBOShield Pro Class A W1 Breather Membrane
ARBOShield Pro Class A Air & Vapour Control Layer
ARBOShield Pro Class B W1 Breather Membrane
ARBOShield Pro External Perimeter Class A Membrane (EPAM)
ARBOShield Pro Class A High-Tack Sealing Tapes
ARBOProtect Pro
ARBO Intumescent and Fire-Resistant Mastics, Sealants and Foams
ARBOSeal Pro Sealing Tapes

IMPORTANT: The information in this leaflet is given in good faith and based on results gained from experience and tests. However, all recommendations or suggestions are made without guarantee since the conditions of use are beyond our control. Goods are supplied subject to the Company's terms and conditions of sales, a copy of which is available on request.

CARLISLE® Adshead Ratcliffe & Co. Ltd United Kingdom

Derby Road | Belper
Derbyshire

DE56 1WJ
United Kingdom

T +44 (0)1773 826661
F +44 (0)1773 821215

E info.arbo@ccm-europe.com
www.arbo.co.uk

