



Features

- Flexible snap or slide-on clips install quickly, allowing for height adjustments during installation of channel
- Low profile design; maximizes available occupied space
- Preferred choice for acoustical performance
- Eliminates accidental short-circuiting common with resilient channel
- Frame independent solution
- Can be used on metal, wooden, brick and concrete structures
- Reduces airborne noise and impact noise

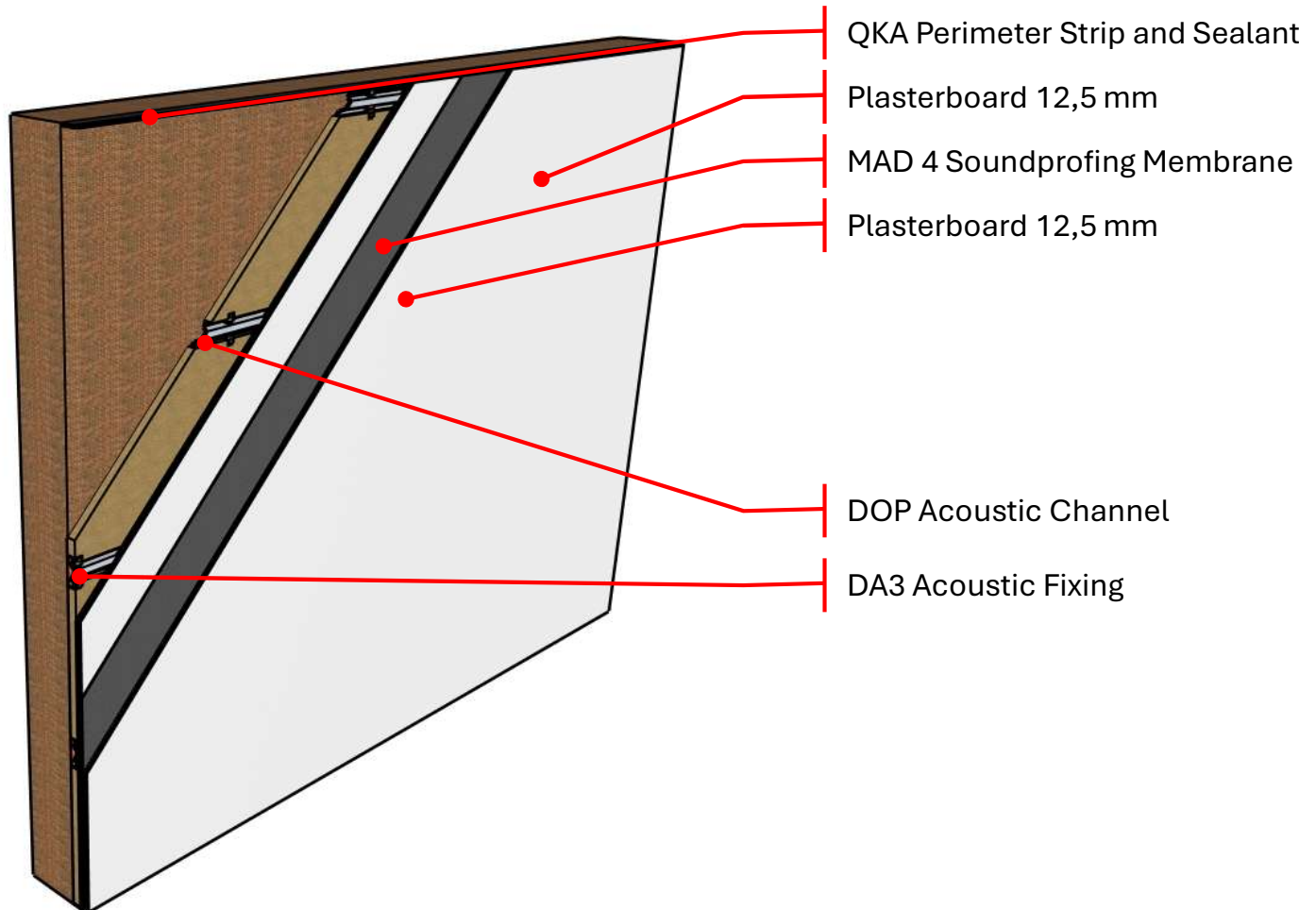
Product Data

Description	Rubber Polymer Acoustic Fixing
Installation Thickness (mm)	35 mm
Dimensions (mm)	24,5*26*114
Operating Temperature	-50 °C to 110 °C
Max Load	20 kg (45 lb) per fixing

Acoustic Performance

Airborne Noise $\Delta R_{w, \text{direct}}$ (dB)	12,6
---	-------------





Fixings

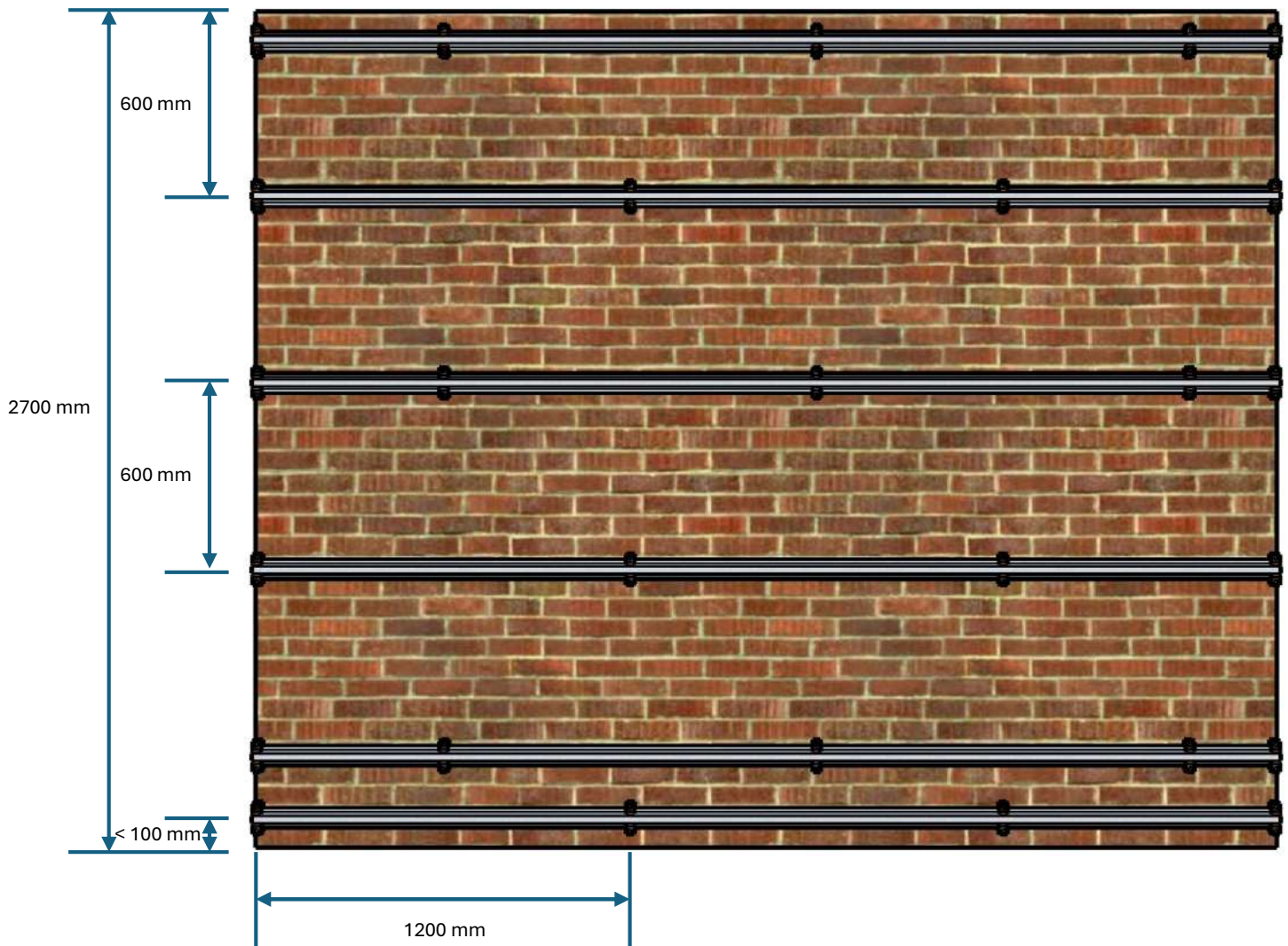
To Stud Wall - 5mm x 60mm Wood Screw

To Brick/Concrete Wall - Hammer Fix Plug & Screw

To Concrete Substrate Ceiling - Anchor Bolt

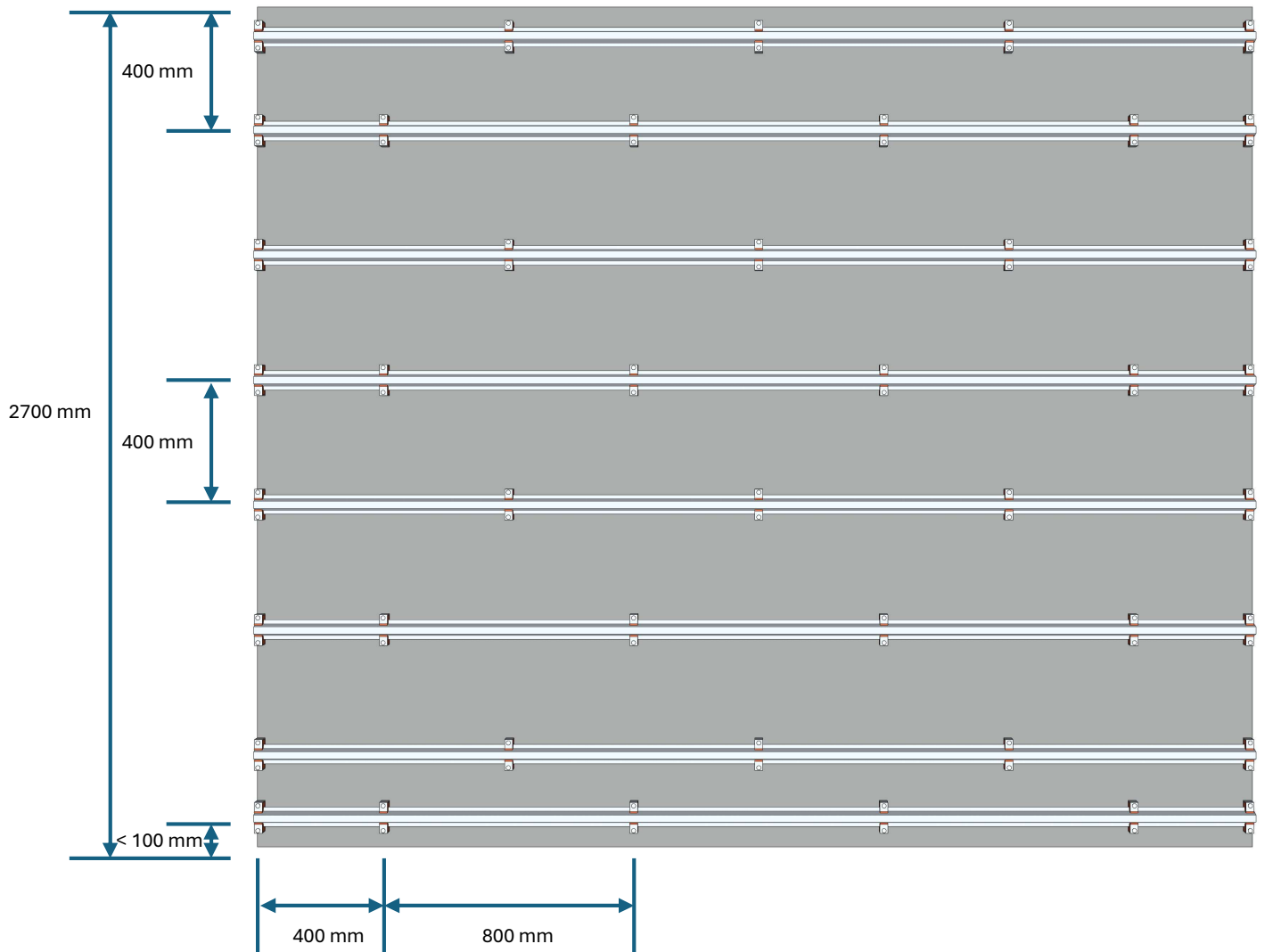
To Wooden Joist Ceiling - 5mm x 60mm Wood Screw

Suitability of fixings to be confirmed by installer.



Installation Layout to Stud/Concrete/Brick Wall

- Perimeter DA3 fixings should be located no further than 100mm from the adjacent surfaces.
- DA3 to be spaced a maximum 600 mm on wall (vertically) and maximum 1200 mm on channel centers creating a Diamond configuration. (see the layout above)
- Attach DOP channels to DA3 Fixings. Channels must run horizontally.
- Channels must overlap by 200 mm. Secure overlapped pieces with screws per standard industry practice. Channels should not overlap on a DA3 fixing.
- Adhere resilient perimeter strip, QKA , on the floor where drywall or other substrate is expected to be supported. This creates a resilient layer that ensures the isolated wall remains decoupled from the structure. Install drywall or other substrate using industry standard practices.
- Leave 2-5 mm air gap around the perimeter of the room and seal the perimeter and any other gaps with Acoustics Sealant.



Installation Layout to Stud/Concrete Ceiling

- Perimeter DA3 fixings should be located no further than 100mm from the adjacent surfaces.
- DA3 to be spaced a maximum 400 mm on ceiling (vertically) and maximum 800 mm on channel centers creating a Diamond configuration. (see the layout above)
- Attach DOP channels to DA3 Fixings. Channels must run horizontally.
- Channels must overlap by 200 mm. Secure overlapped pieces with screws per standard industry practice. Channels should not overlap on a DA3 fixing.
- Adhere resilient perimeter strip, QKA , around the perimeter of the ceiling. This creates a resilient layer that ensures the isolated ceiling remains decoupled from the structure. Install drywall or other substrate using industry standard practices.
- Leave 2-5 mm air gap around the perimeter of the room and seal the perimeter and any other gaps with Acoustics Sealant.